

1. Electrolytic Capacitor Life(壽命降額曲線)

※Character Condition(特性條件) :

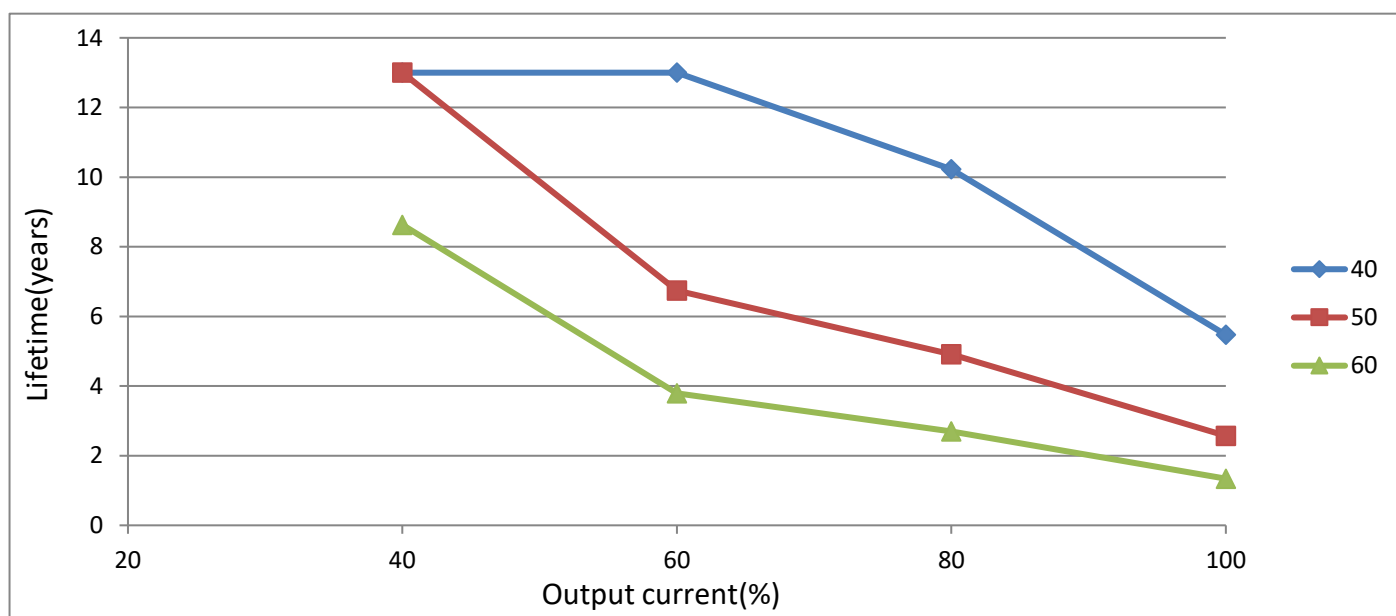
1	I/P Voltage(Vac)(輸入電壓)	100V
2	I/P Frequency(Hz)(輸入頻率)	50Hz
3	Output load(輸出負載)	40%~Full Load
4	Ambient Temp.(°C)(環境溫度)	40°C/50°C/60°C
5	Sample Size(取樣數)	1PCS
6	Mounting Method(取付方法)	Mounting A

※Character Equipment(特性設備) :

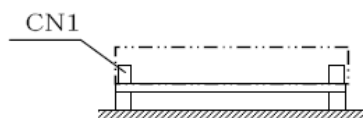
1	Equipment Item(設備)	Model No. / Manufacturer(製造商和型號)
2	AC Source(變頻器)	ALL POWER/APG-1005N
3	Power Meter(功率表)	IDRC/CP-260
4	DC load(DC負載)	Prodigit/3302C
5	Oscilloscope(示波器)	Tektronix/TDS3014B

※Character Data(特性數據) :

壽命曲線圖					
Output current(%)		40	60	80	100
Temperature (°C)	40	13	13	10.23	5.47
	50	13	6.74	4.91	2.57
	60	8.63	3.79	2.7	1.34



Mounting A



2.Electrolytic Capacitor Life(壽命降額曲線)

※Character Condition(特性條件):

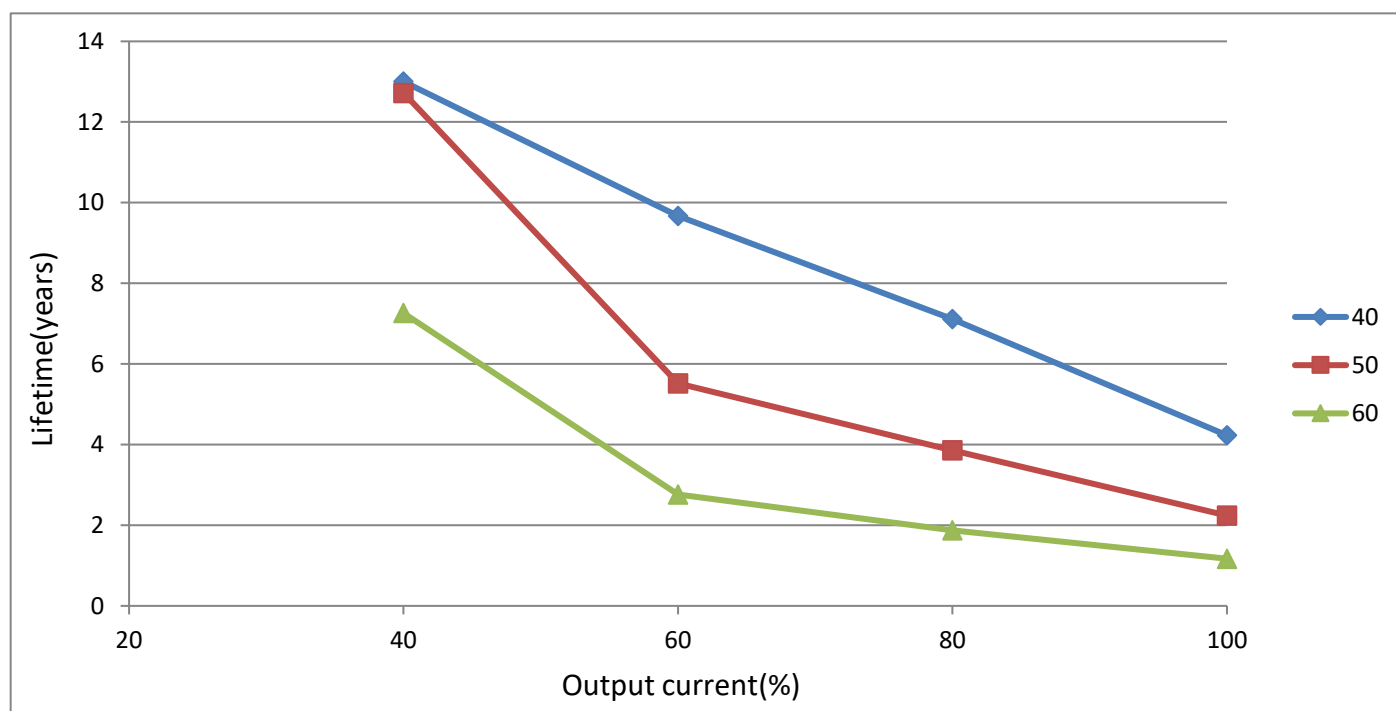
1	I/P Voltage(Vac)(輸入電壓)	100V
2	I/P Frequency(Hz)(輸入頻率)	50Hz
3	Output load(輸出負載)	40%~Full Load
4	Ambient Temp.(°C)(環境溫度)	40°C/50°C/60°C
5	Sample Size(取樣數)	1PCS
6	Mounting Method(取付方法)	Mounting B

※Character Equipment(特性設備):

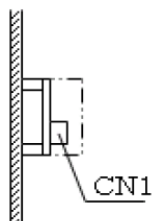
1	Equipment Item(設備)	Model No. / Manufacturer(製造商和型號)
2	AC Source(變頻器)	ALL POWER/APG-1005N
3	Power Meter(功率表)	IDRC/CP-260
4	DC load(DC負載)	Prodigit/3302C
5	Oscilloscope(示波器)	Tektronix/TDS3014B

※Character Data(特性數據):

壽命曲線圖					
Output current(%)		40	60	80	100
Temperature (°C)	40	13	9.67	7.11	4.23
	50	12.72	5.52	3.86	2.24
	60	7.26	2.76	1.87	1.17



Mounting B



3.Electrolytic Capacitor Life(壽命降額曲線)

※Character Condition(特性條件)：

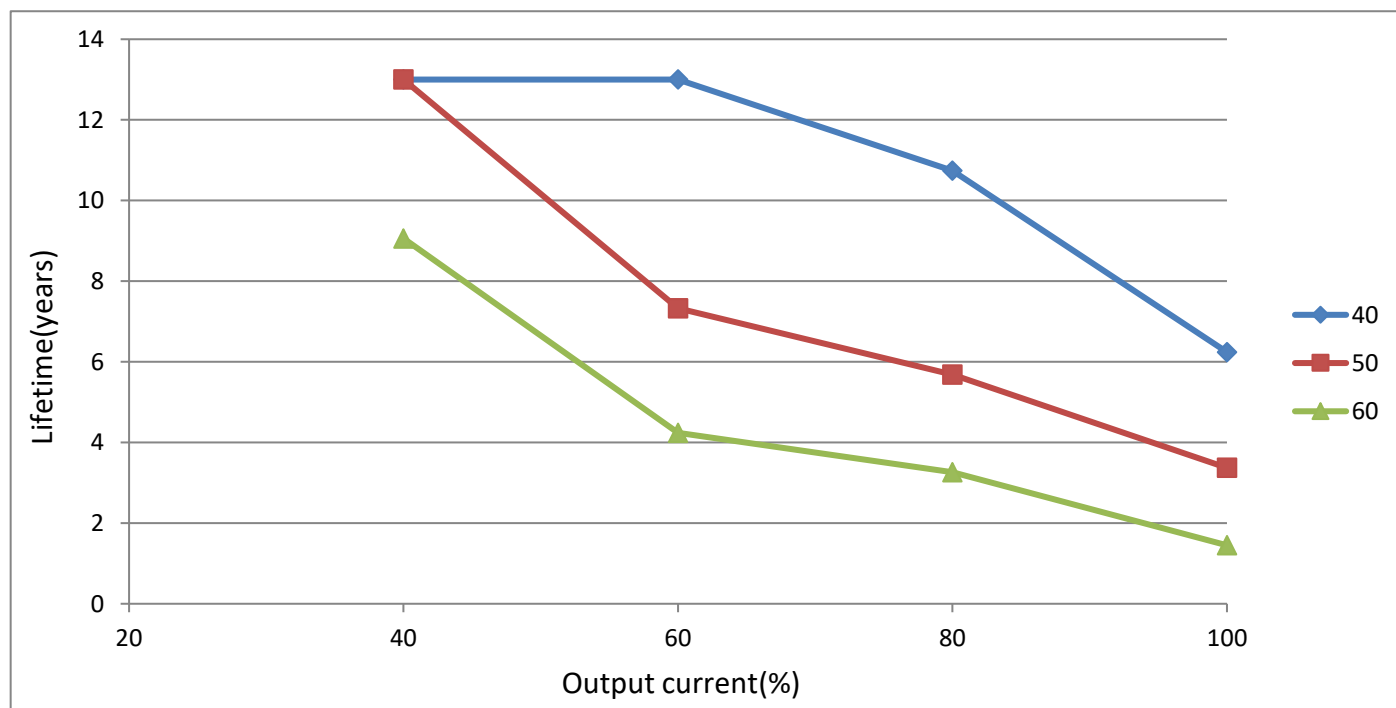
1	I/P Voltage(Vac)(輸入電壓)	100V
2	I/P Frequency(Hz)(輸入頻率)	50Hz
3	Output load(輸出負載)	40%~Full Load
4	Ambient Temp.(°C)(環境溫度)	40°C/50°C/60°C
5	Sample Size(取樣數)	1PCS
6	Mounting Method(取付方法)	Mounting C

※Character Equipment(特性設備)：

1	Equipment Item(設備)	Model No. / Manufacturer(製造商和型號)
2	AC Source(變頻器)	ALL POWER/APG-1005N
3	Power Meter(功率表)	IDRC/CP-260
4	DC load(DC負載)	Prodigit/3302C
5	Oscilloscope(示波器)	Tektronix/TDS3014B

※Character Data(特性數據)：

壽命曲線圖					
Output current(%)		40	60	80	100
Temperature (°C)	40	13	13	10.74	6.24
	50	13	7.33	5.68	3.37
	60	9.06	4.24	3.26	1.45



MountingC

